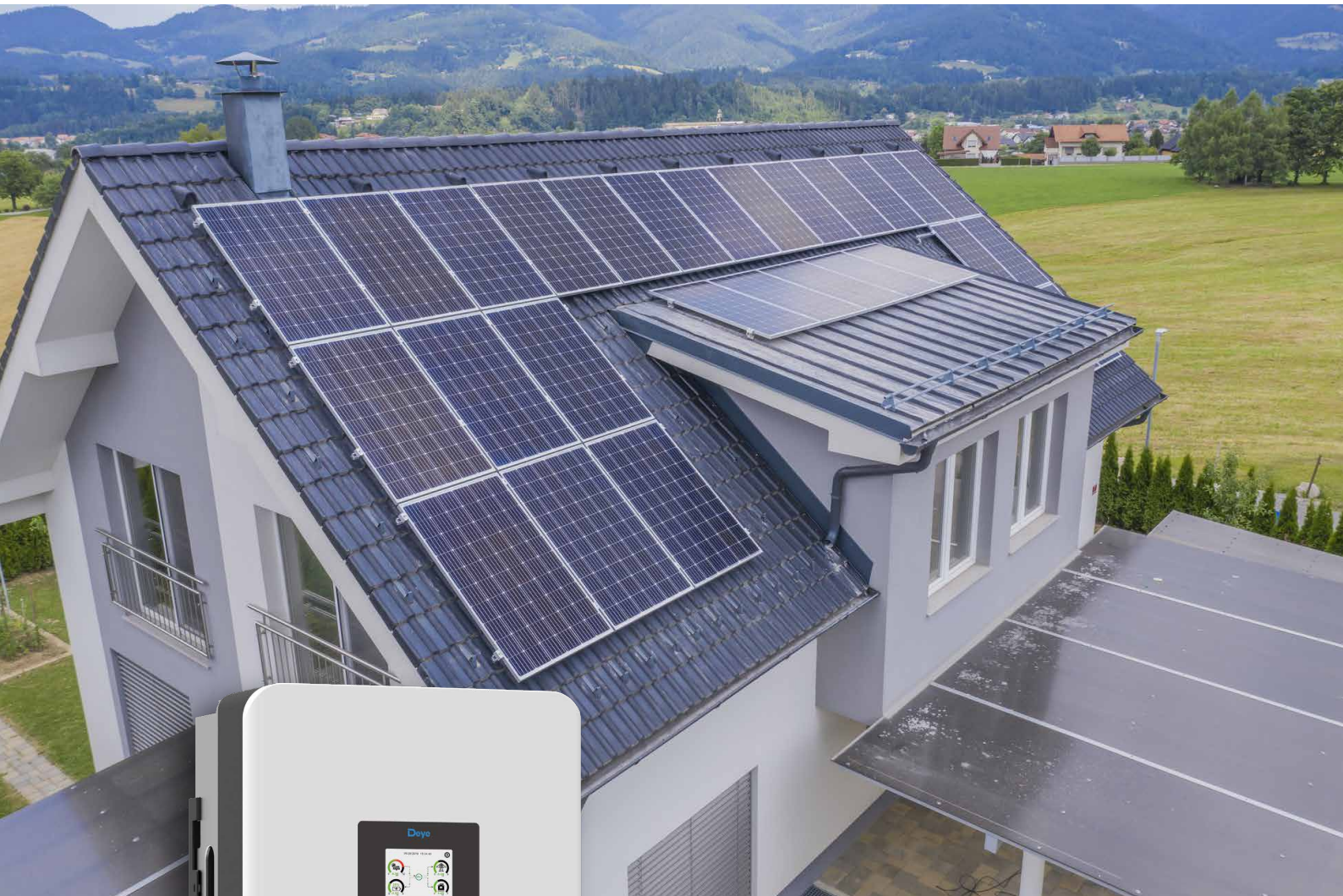


# Split Phase Hybrid Inverter

SUN-5/6/8K-SG05LP2-US-SM2

SUN-10/12K-SG05LP2-US-SM3



Colorful touch LCD, IP65 protection degree



AC couple to retrofit existing solar system



Max. 16 pcs parallel for on-grid and off-grid operation; Support multiple batteries parallel



Max. charging/discharging current of 220A



6 time periods for battery charging/discharging



Support storing energy from diesel generator

**Deye**

Stock Code: 605117.SH

# Technical Data

Model	SUN-5K-SG05 LP2-US-SM2	SUN-6K-SG05 LP2-US-SM2	SUN-8K-SG05 LP2-US-SM2	SUN-10K-SG05 LP2-US-SM3	SUN-12K-SG05 LP2-US-SM3
<b>Battery Input Data</b>					
Battery Type	Lead-acid or Lithium-ion				
Battery Voltage Range (V)	40-60				
Max. Charging Current (A)	120	135	190	220	220
Max. Discharging Current (A)	120	135	190	220	220
Rated Battery Power (W)	5000	6000	8000	10000	10000
Charging Strategy for Li-ion Battery	Self-adaption to BMS				
Number of Battery Input	2				
<b>PV String Input Data</b>					
Max. PV Input Power (W)	8000	9600	12800	16000	19200
Max. PV Input Voltage (V)	500				
Start-up Voltage (V)	125				
MPPT Voltage Range (V)	150-425				
Rated PV Input Voltage (V)	370				
Max. Operating PV Input Current (A)	18+18		32+32		32+32+32
Max. Input Short-Circuit Current (A)	27+27		60+60		60+60+60
No. of MPP Trackers/ No. of Strings MPP Tracker	2/1+1		2/2+2		3/2+2+2
<b>AC Input/Output Data</b>					
Rated AC Input/Output Active Power (W)	5000	6000	8000	10000	12000
Max. AC Input/Output Apparent Power (VA)	5000	6000	8000	10000	12000
Rated AC Input/Output Current (A)	20.9	25	33.4	41.7	50
Max. AC Input/Output Current (A)	20.9	25	33.4	41.7	50
Max. Continuous AC Passthrough (grid to load) (A)	100				
Peak Power (off-grid) (W)	2 times of rated power, 10s				
Power Factor Adjustment Range	0.8 leading to 0.8lagging				
Rated Input/Output Voltage/Range (V)	120/240, 120/208		0.88Un < U < 1.1Un		
Rated Input/Output Grid Frequency/Range(Hz)	60/55-65				
Grid Connection Form	2L+N+PE				
Total Current Harmonic Distortion THDi	<3% (of nominal power)				
DC Injection Current	<0.5% In				
<b>Efficiency</b>					
Max. Efficiency	97.6%				
Euro Efficiency	96.5%				
MPPT Efficiency	>99%				
<b>Equipment Protection</b>					
Integrated	DC reverse polarity protection, AC Output Overcurrent Protection, AC Output Overvoltage Protection, AC Output Short Circuit Protection, Thermal Protection, Insulation Impedance detection, DC Component Monitoring, Arc fault circuit interrupter (AFCI) (Optional), Anti-islanding protection , DC Switch, Residual Current Detection				
Surge Protection Level	TYPE II(DC),TYPE II(AC)				
<b>Interface</b>					
LCD/LED Display	LCD				
Communication Interface	RS485/RS232/CAN				
<b>General Data</b>					
Operating Temperature Range (°C)	-40 to +60°C, >45°C Derating				
Permissible Ambient Humidity	0-100%				
Permissible Altitude	3000m				
Noise (dB)	<45				
Ingress Protection(IP) Rating	TYPE 3R				
Inverter Topology	Non-Isolated				
Over Voltage Category	OVC II(DC), OVC IV(AC)				
Type Of Cooling	Intelligent air cooling				
Cabinet Size (WxHxD mm)	386×606.5×240 (Excluding connectors and brackets)				
Weight (kg)	29.2				
Warranty	5 Years/10 Years the Warranty Period Depends the Final Installation Site of Inverter, More Info Please Refer to Warranty Policy				
Grid Regulation	IEEE 1547.1, SRD V2.0				
Safety / EMC Standard	FCC, UL 1741				