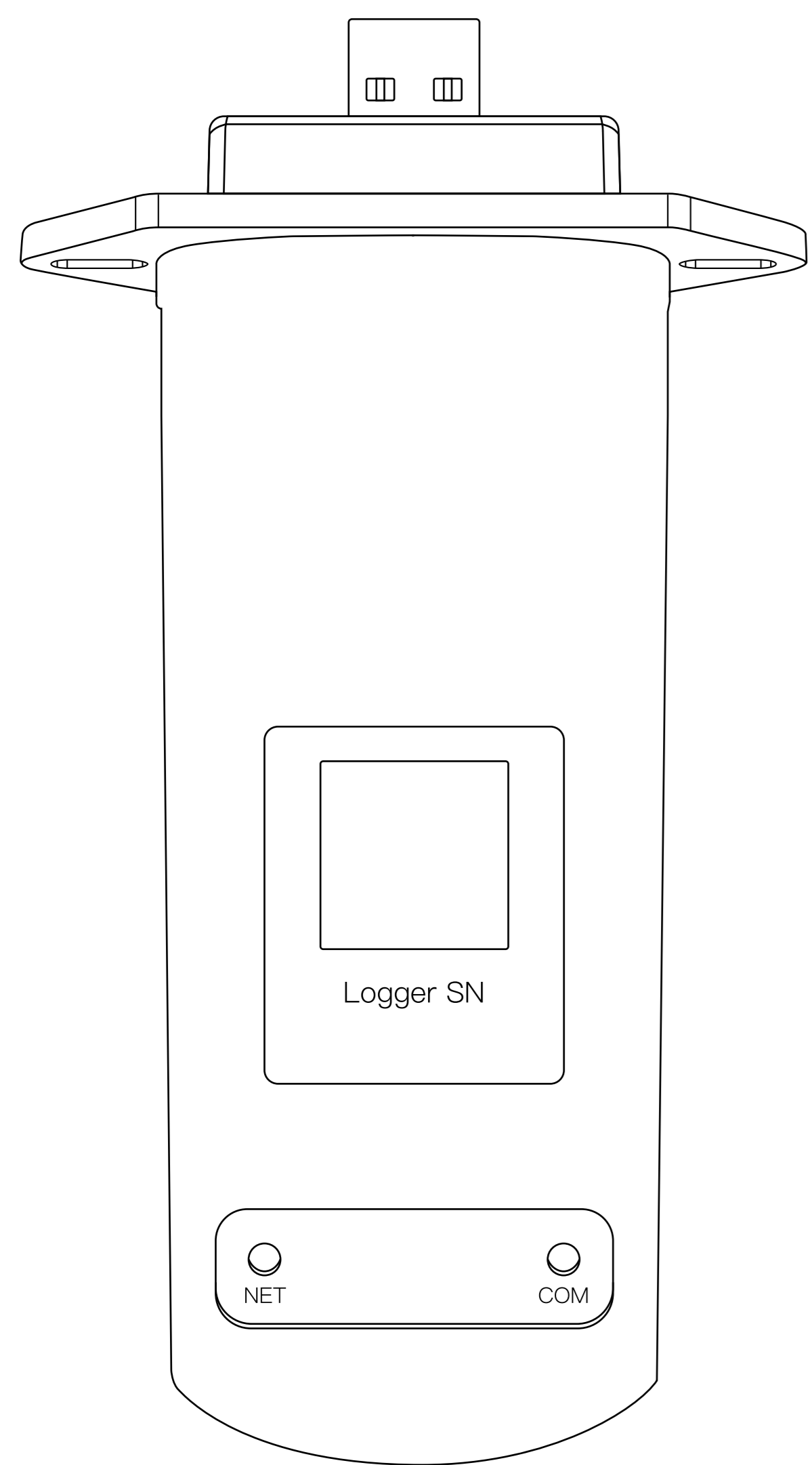


Data Logger Quick Guide

Model:DL1000B-ETH



Disclaimer:

Please read this manual carefully before using products and keep it in the place where O&M providers can easily find.

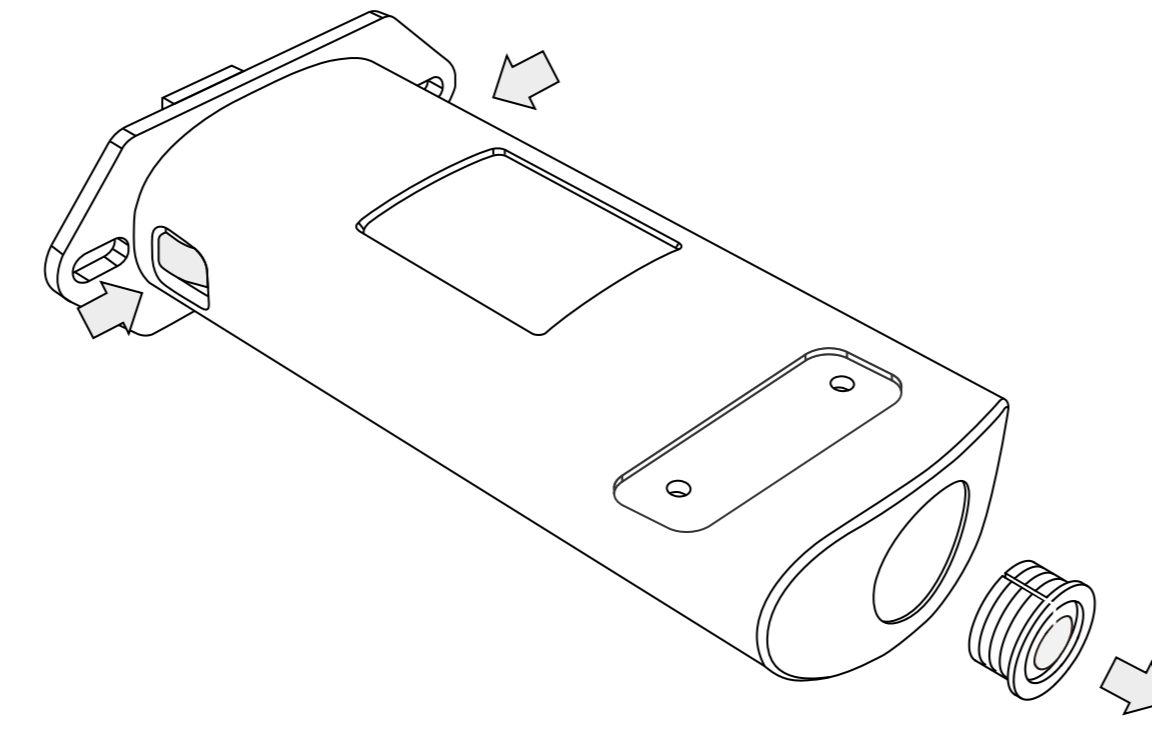
Due to product upgrade and other factors, the content of this manual might change from time to time. Please take actual product as standard and get latest manual from www.deyecloud.com or sales. Unless otherwise agreed herein, this manual will only be used as guidance. Any statement, information or suggestion in this manual will not take any form of responsibility.

Without written permission, any content of this document (partly or entirely) cannot be extracted, copied or transmitted in any form by any company or individual.

Network Cable Assembly

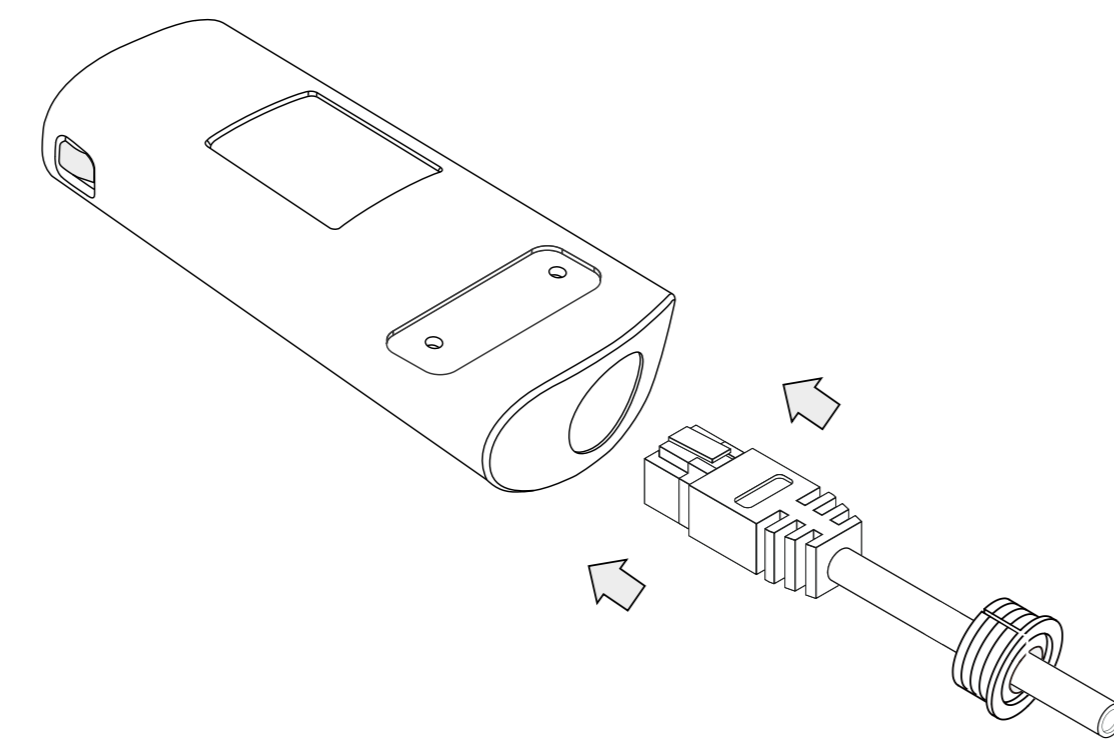
1 Remove bottom cover

Remove the bottom cover and waterproof plug of the data logger.



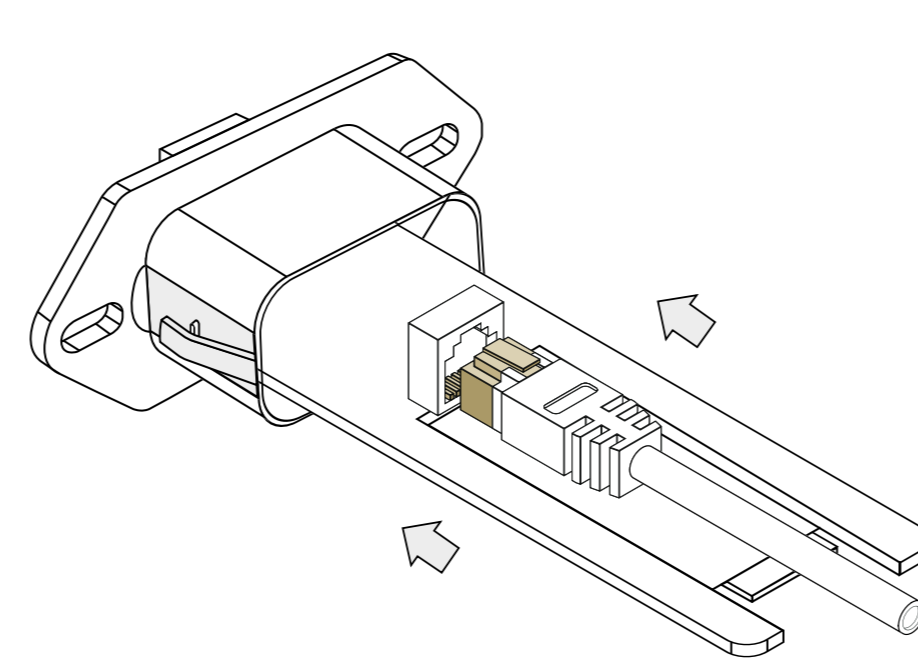
2 Wear Ethernet cable

Thread the network cable through the hole in the bottom cover.



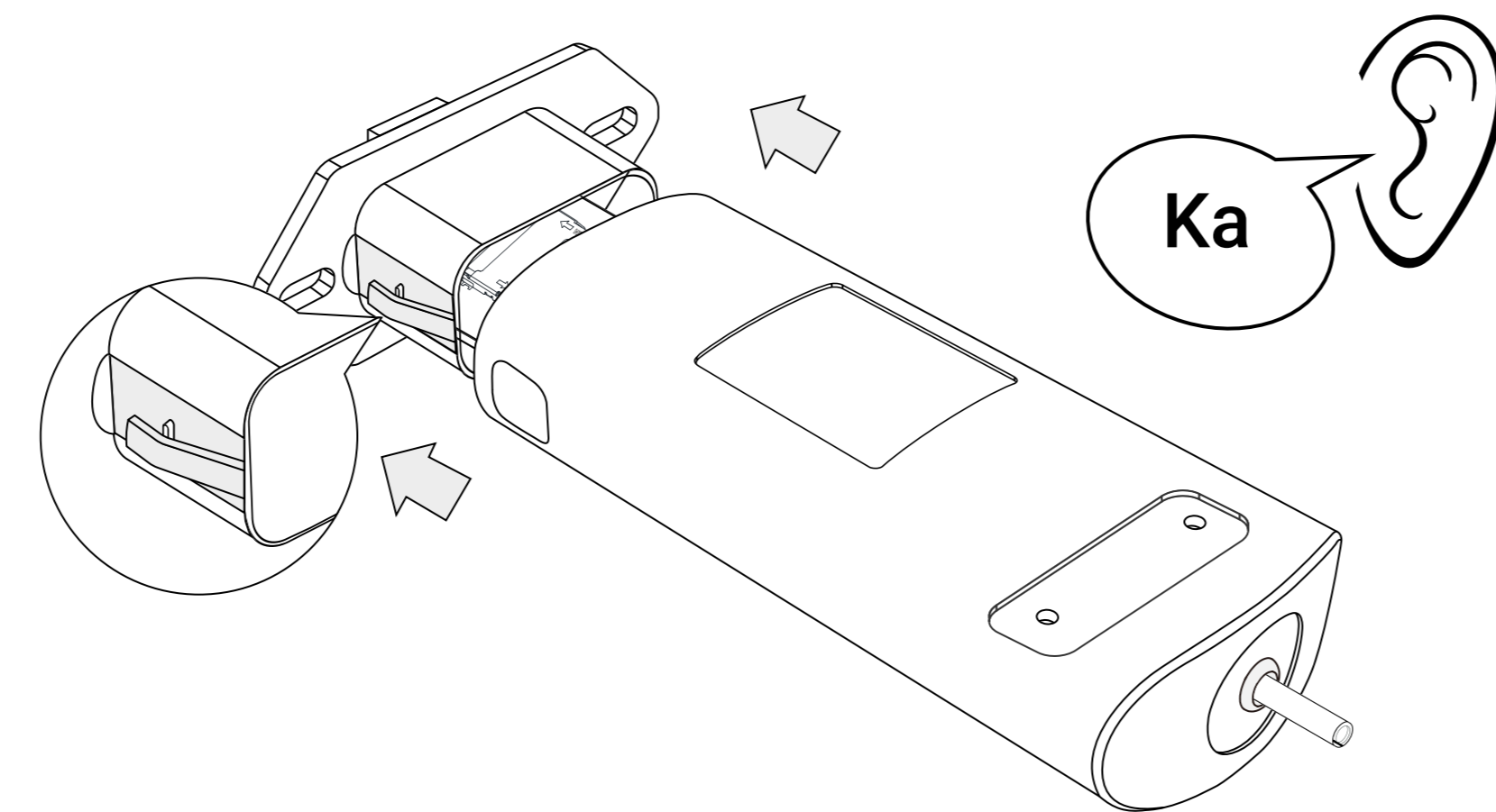
3 Insert Ethernet cable

Insert the network cable into the Ethernet port.



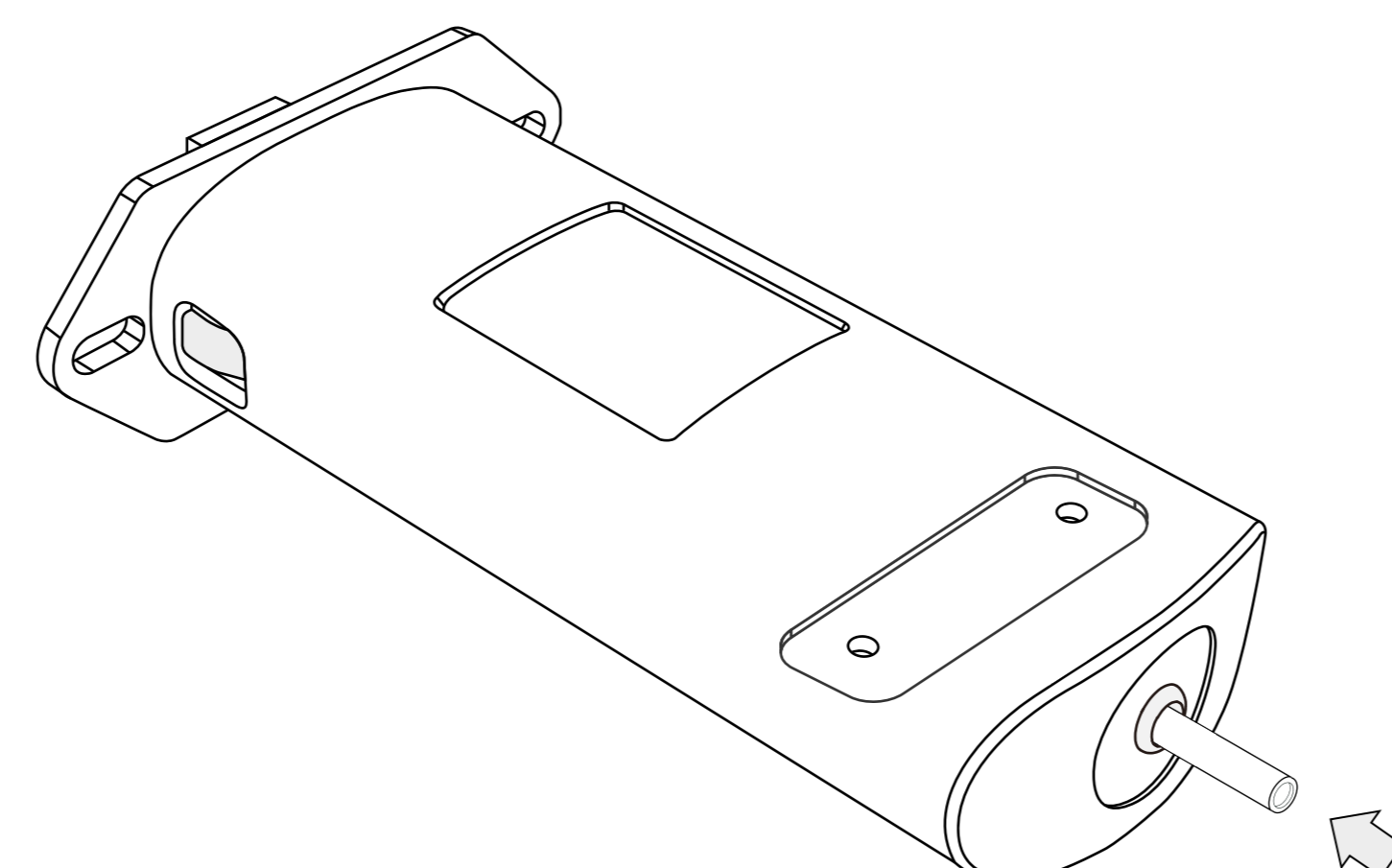
4 Install the bottom cover

Reinstall the outer casing until a "click" sound is heard (indicating it is properly secured).



4 Install waterproof plug

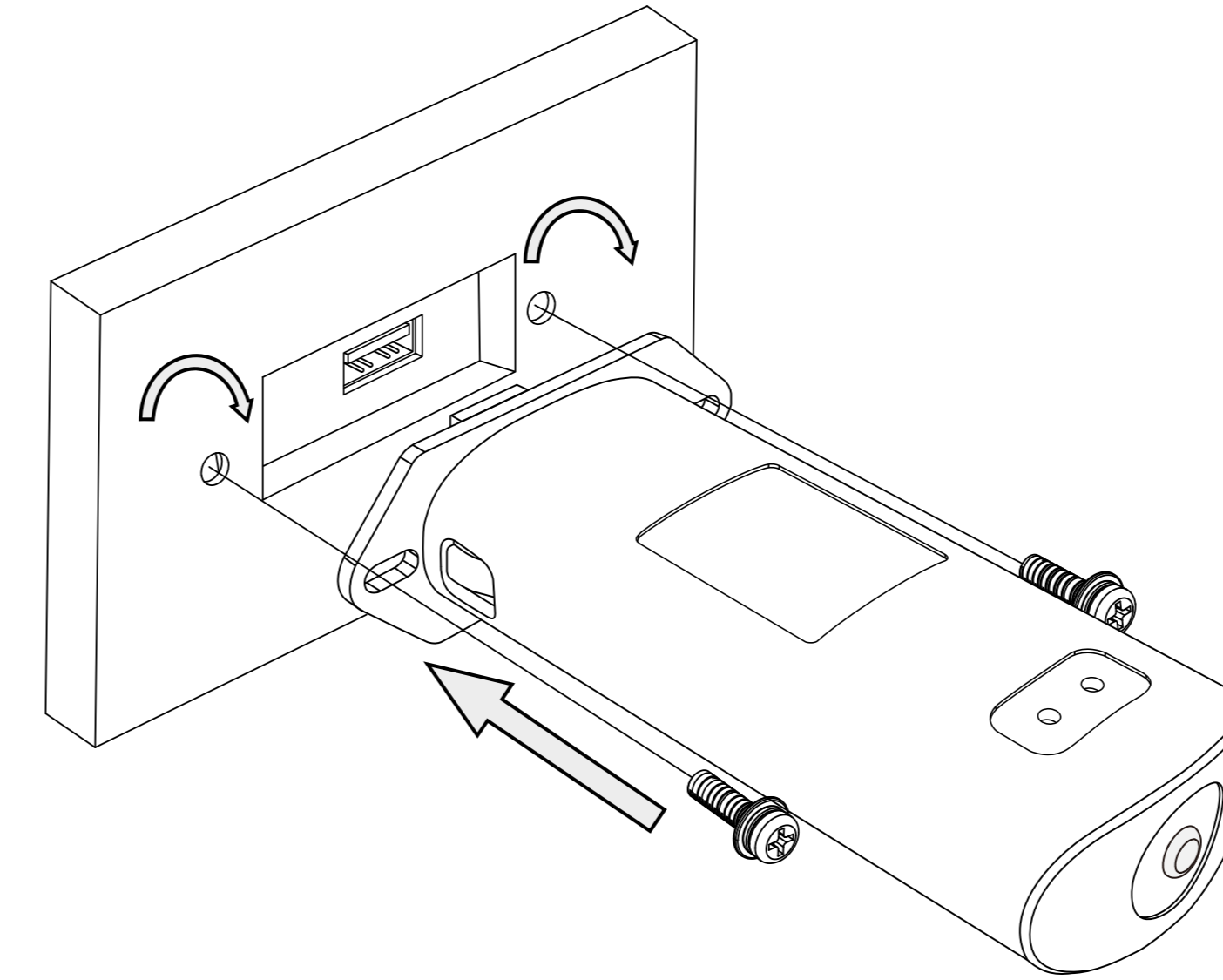
Slide the waterproof plug over the network cable, then insert it into the hole and ensure it is tightly fitted.



Product Introduction

1 Data Logger Installation

Assemble logger to the inverter communication interface as shown in the diagram.



2 Logger Status

| Lights | Implication | Status Description (Both lights are red/blue lights.) |
|---------------|------------------------------|--|
| ● NET | Connection with cloud server | <ol style="list-style-type: none"> Light Off: Connection to the cloud server failed. Blue Light On: Connection to the cloud server succeeded. Blue Light Flash: Connecting to the cloud server / collector OTA Blue Light Flash slowly: Connection to the router succeeded. Red Light On: Connection error. |
| ● COM | Communication with device | <ol style="list-style-type: none"> Light Off: Communication with the device failed. Blue Light On: Communication to the device succeeded. Blue Light Flash: OTA running / Restoring factory setting. Blue Light Flash slowly: Power On Red Light On: Communication error. |
| ● + ● NET COM | Restore the factory settings | NET Blue light flash, and COM Blue light flash: restoring factory settings. |

The normal operation status of the data logger, when router connected to the network normally:

- Connection to the server succeeded: NET blue light keeps on.
- Connection to the device succeeded: COM blue light keeps on.

3 Abnormal State Processing

If the data on platform is abnormal when the data logger is running, please check the table below and according to the status of indicator lights to complete a simple troubleshooting. If it still can not be resolved or indicator lights status do not show in the table below, please contact Customer Support. (Note: Please using the following table query after power-on for 2mins at least.)

| ● NET | ● COM | Description | Possible Reason | Recommended Process |
|---------------------------|-------|--|--|--|
| Red light flashing slowly | Any | Communication between data logger and cloud abnormal | <ol style="list-style-type: none"> Network congestion Wireless signal unstable | <ol style="list-style-type: none"> Check router network Check wireless signal strength Contact customer service |

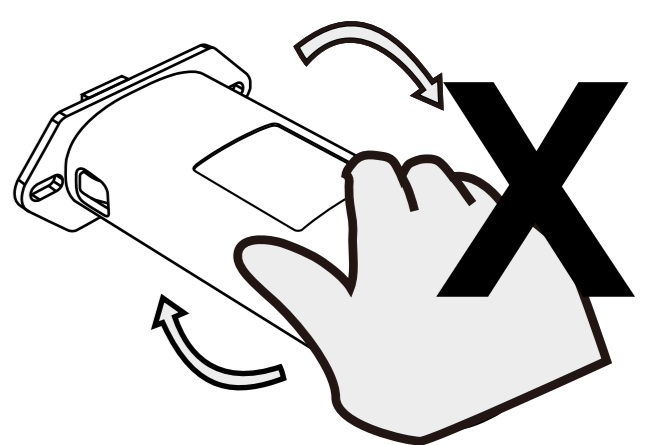
| ● NET | ● COM | Description | Possible Reason | Recommended Process |
|--------------|---------------------------|---|--|--|
| Red light on | Any | Communication between data logger and cloud abnormal | <ol style="list-style-type: none"> Network limited The cloud address connected by the data logger has changed | <ol style="list-style-type: none"> Check router network Contact customer service |
| Any | Red light flashing slowly | Communication between data logger and inverter abnormal | <ol style="list-style-type: none"> Loose connection with inverter Electromagnetic interference causes data transmission error | <ol style="list-style-type: none"> Check connection between data logger and inverter, unplug and reinstall Long press Reboot button for 5s to reboot data logger Check if there are high power electrical appliances nearby |
| Any | Red light on | Communication between data logger and inverter abnormal | <ol style="list-style-type: none"> Loose connection with inverter Communication rate between inverter and data logger does not match | <ol style="list-style-type: none"> Check connection between data logger and inverter, unplug and reinstall Check if inverter's communication rate matches data logger Long press Reboot button for 5s to reboot data logger |

Safety Precautions

Warning

- Please remove logger after power off.

- Please do not hold the logger body to rotate while install or remove the logger.



Notice

- Please make sure the data logger is working properly before you leave the site. If there is anything abnormal, please do not leave the site and contact customer service at the first time.

- 5G WiFi is not supported.

Deye Cloud APP

Download APP



DeyeCloud APP
Please scan QR code to download DeyeCloud APP.



Deye Inverter
Please scan QR code to watch guide video.

Or you can log in to <https://deyecloud.com/>

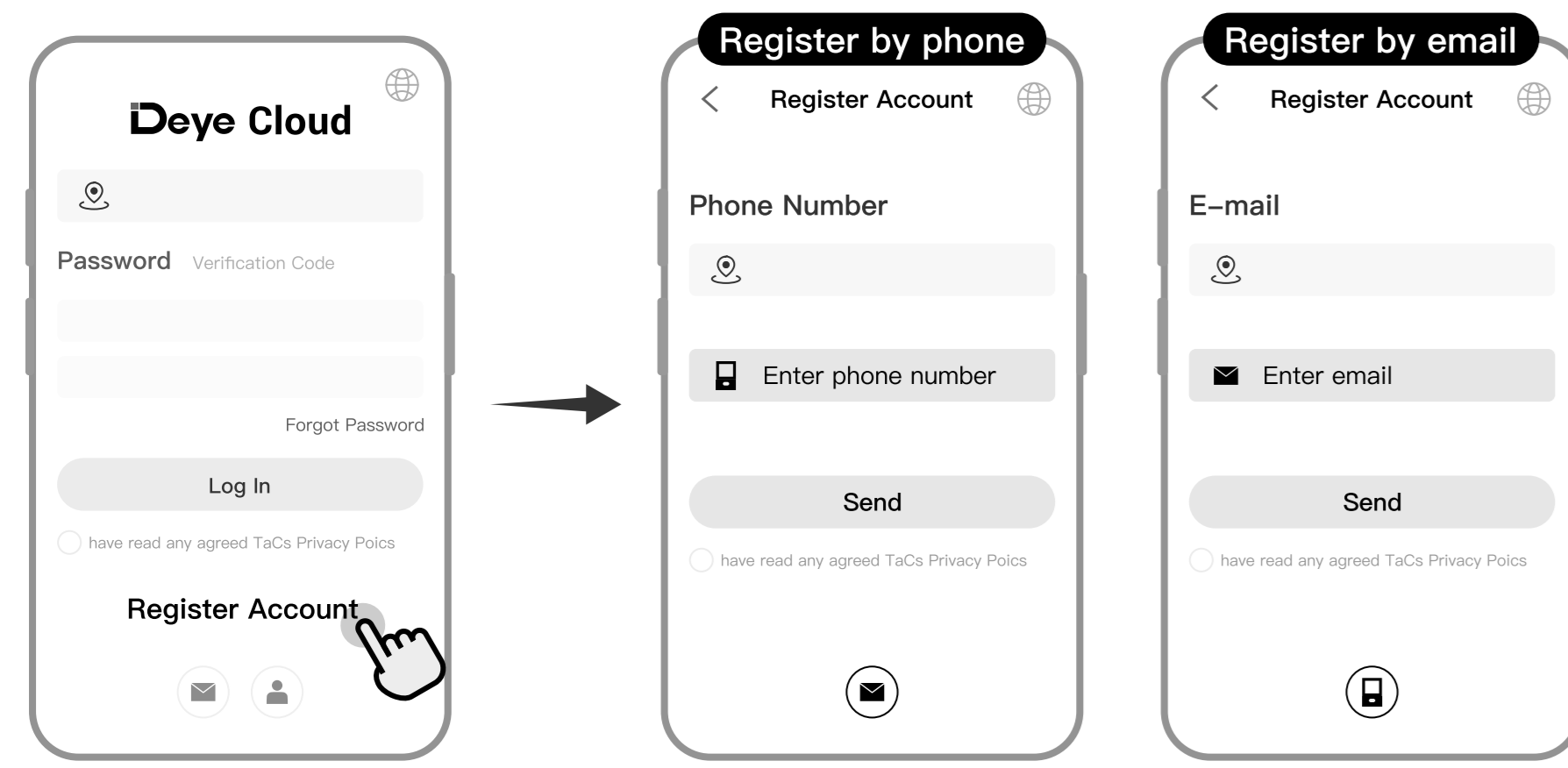
www.youtube.com/@DeyeInverter_official

USER MANUAL for Deye Cloud APP

Please make sure Bluetooth and WiFi are ON and the router can connect to the internet normally.

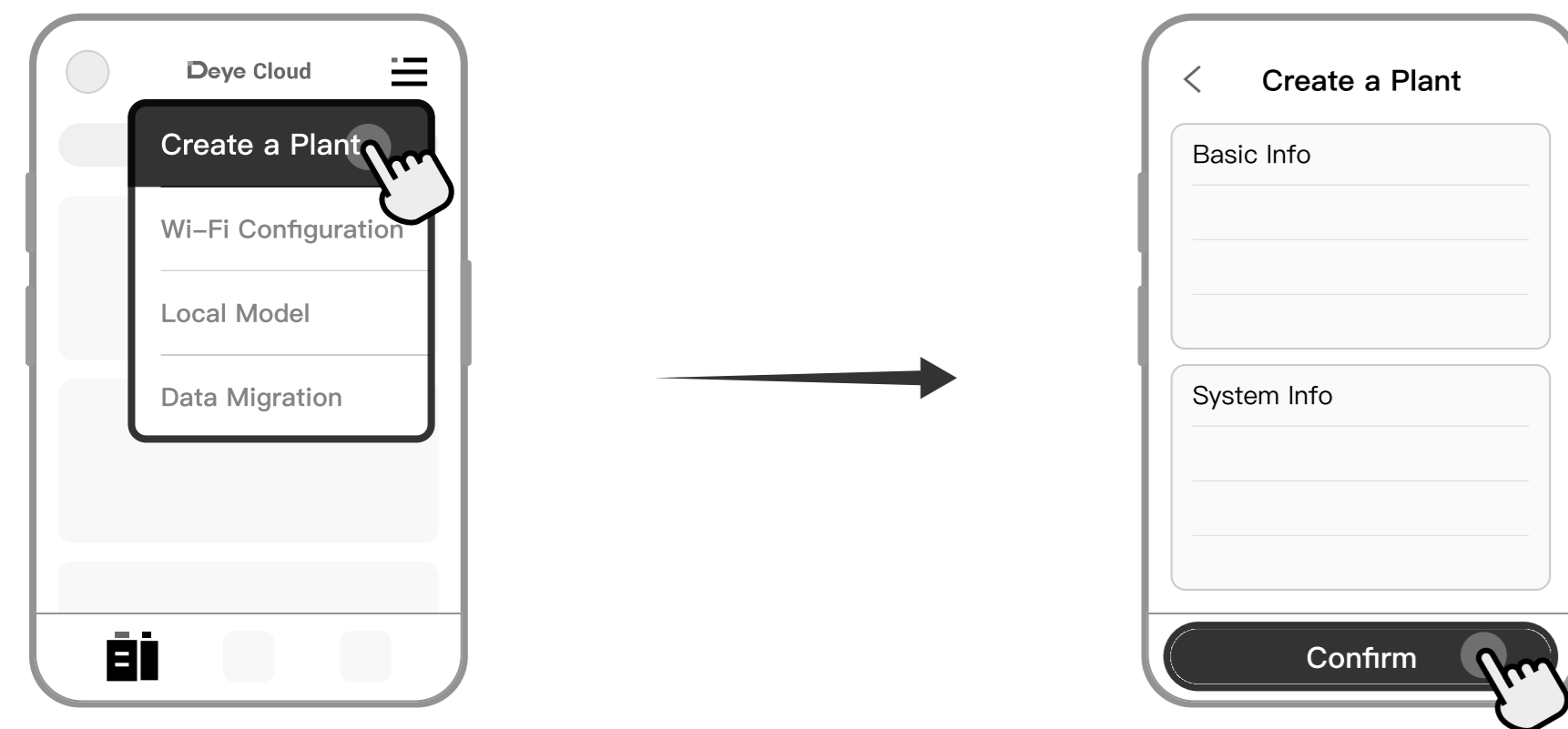
1 Registration

Go to Deye Cloud App and register. Click "Register Account" and create your account here.



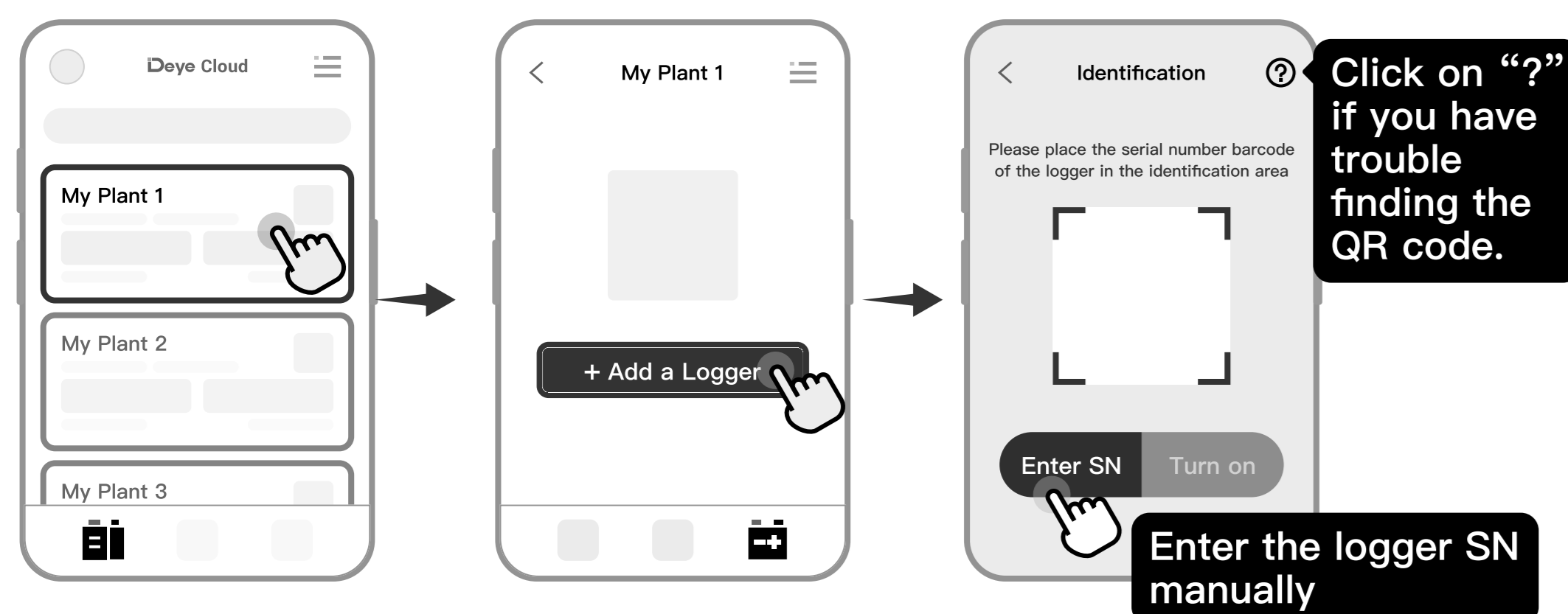
2 Create a Plant

1. Click "Create a Plant" to create your plant.
2. Please fill in plant info here.



3 Add a Logger

1. Choose a Plant.
2. Go to "Device" page and click on "Add a Logger".
3. Scan QR code of the logger, which can be found on the logger body.



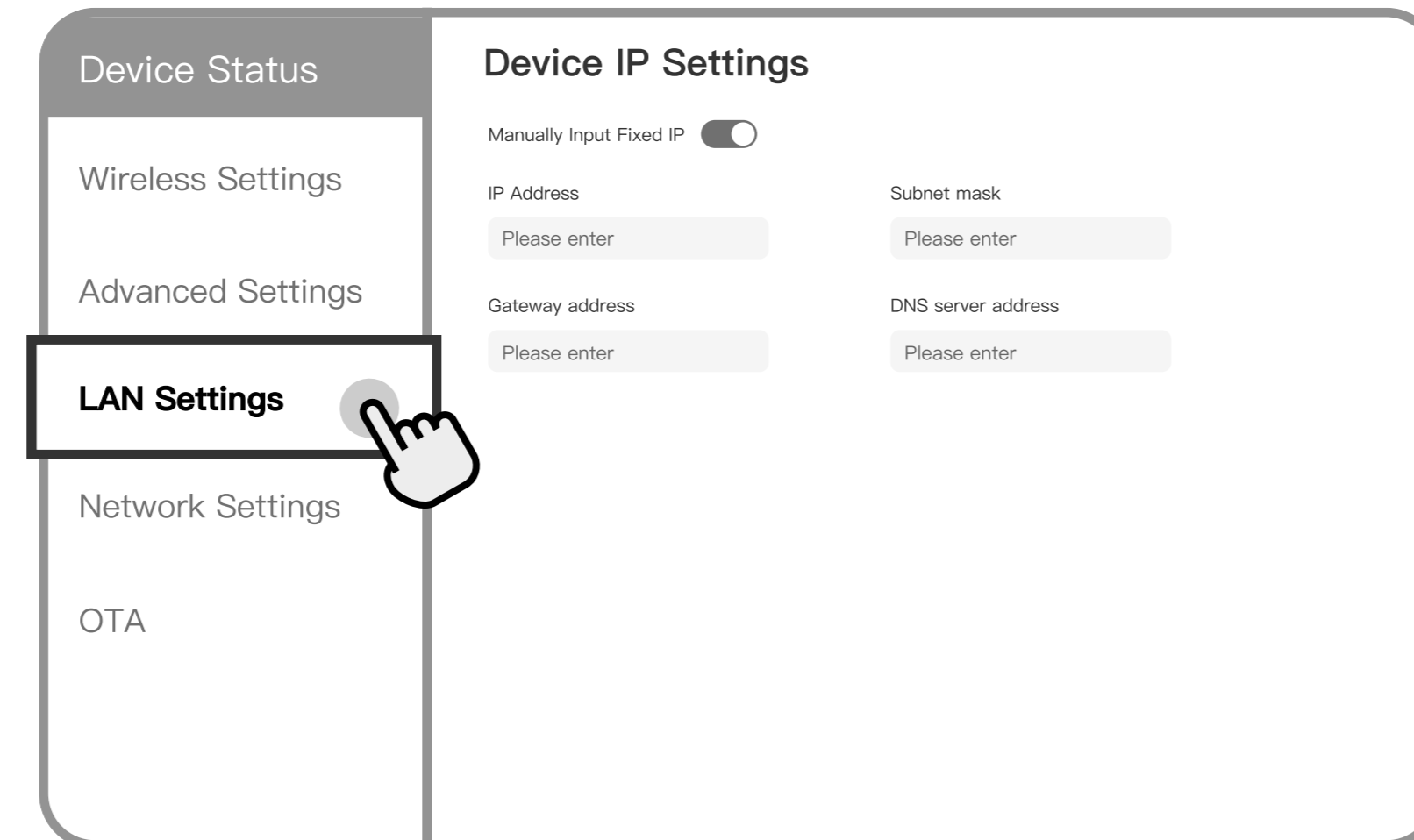
LAN Configuration

Notice: When both Wi-Fi and Ethernet functions are configured, if a network cable is connected, Ethernet function takes priority. Prior to performing the following operations, please log in to the built-in page of the data logger.

If there are no special requirements, there is no need to set the device IP. After connecting to the internet cable, the device automatically connects to the cloud server

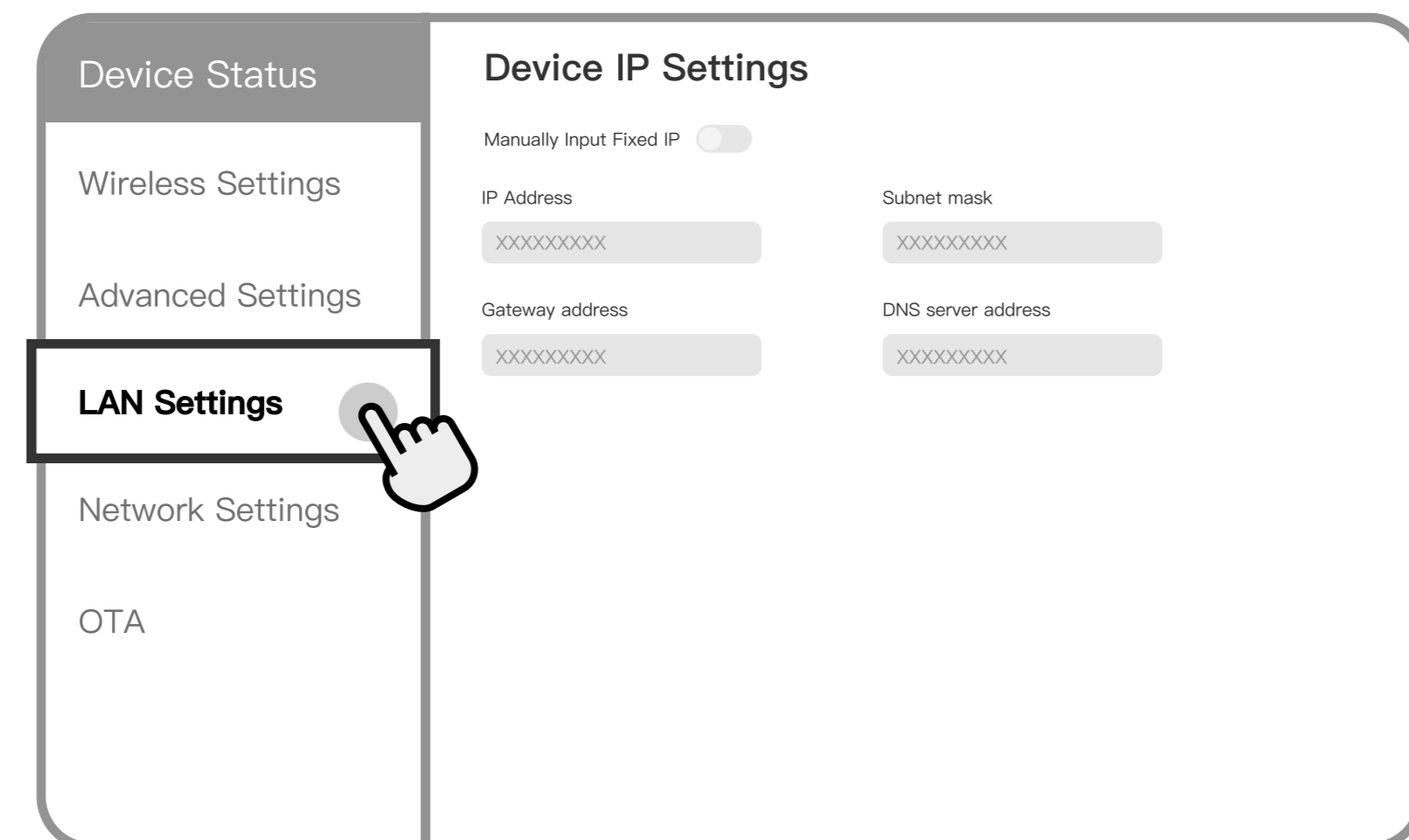
1 Set up Ethernet

Click on "LAN Settings", Default DHCP Enable. No need to set IP address, subnet mask, gateway, and DNS.



2 Set up Ethernet Information

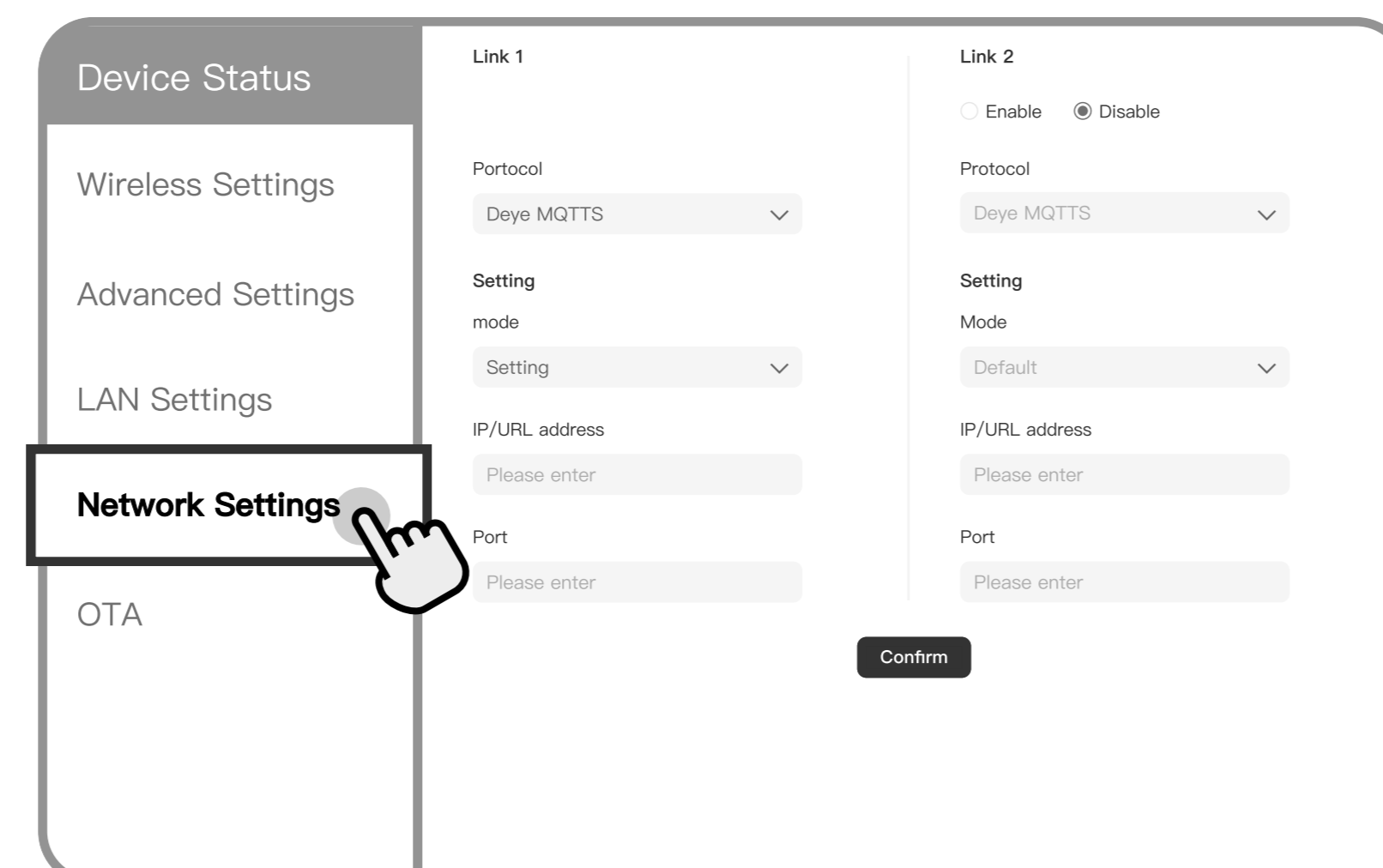
If DHCP is set to Disable, it is necessary to set the IP address, subnet mask, gateway address, and DNS according to the actual situation, and click "confirm" to save.



Network Settings

If there are no special requirements, there is no need to set this option

Device defaults to enabling Link 1 and disabling Link 2. Link 1 defaults to Client mode and automatically connects to the cloud server. Settings can be made as needed.

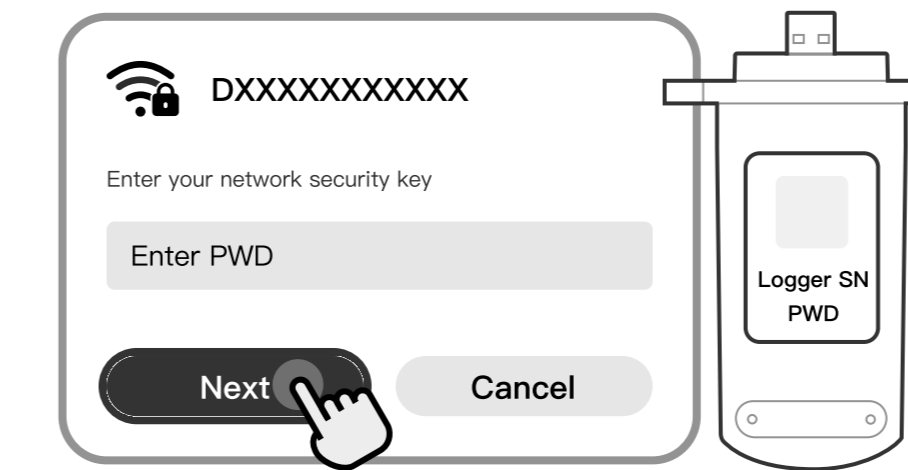


WiFi Configuration

Use the Web Page to Configure WiFi

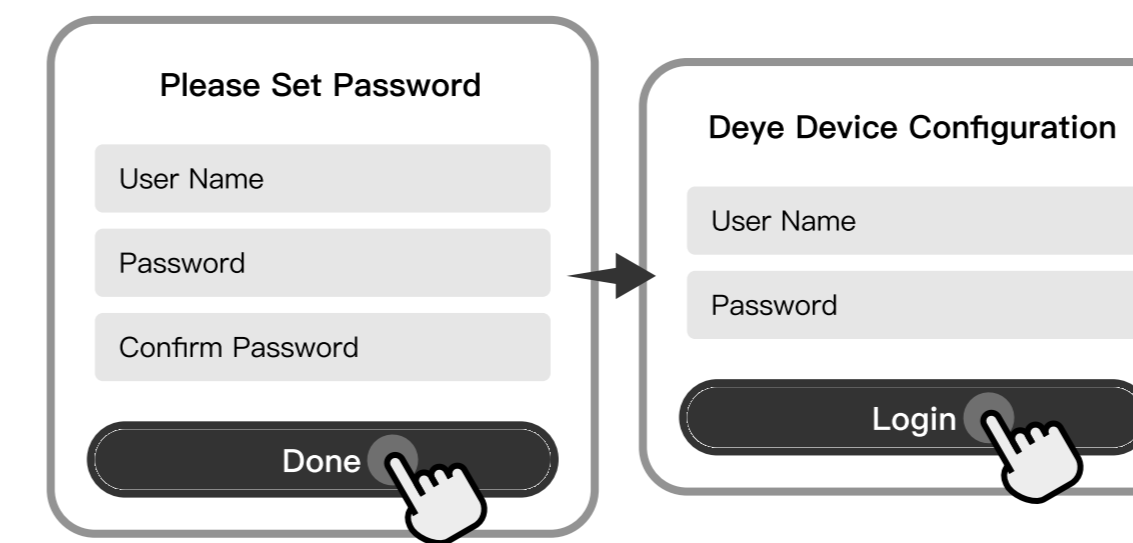
1 Connect to the device WiFi

1. Connect the phone/computer to the WIFI with the name DXXXXXXXXX(Logger SN).



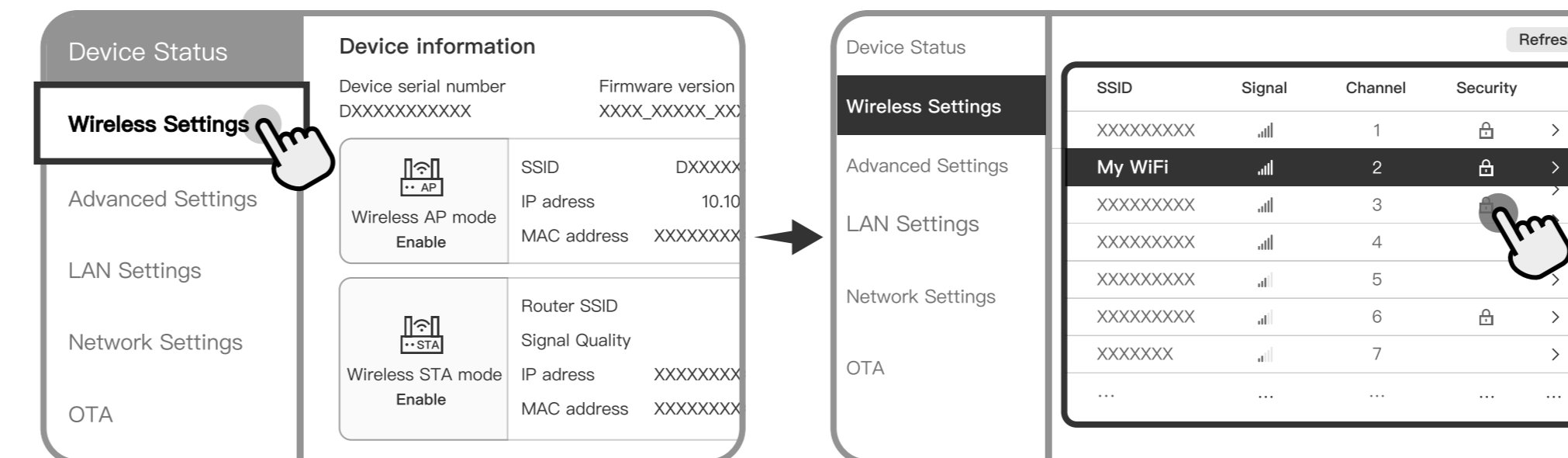
2 Login to the web page

1. Enter following IP address on the web page: 10.10.100.254.
2. Set up user name + password and login.



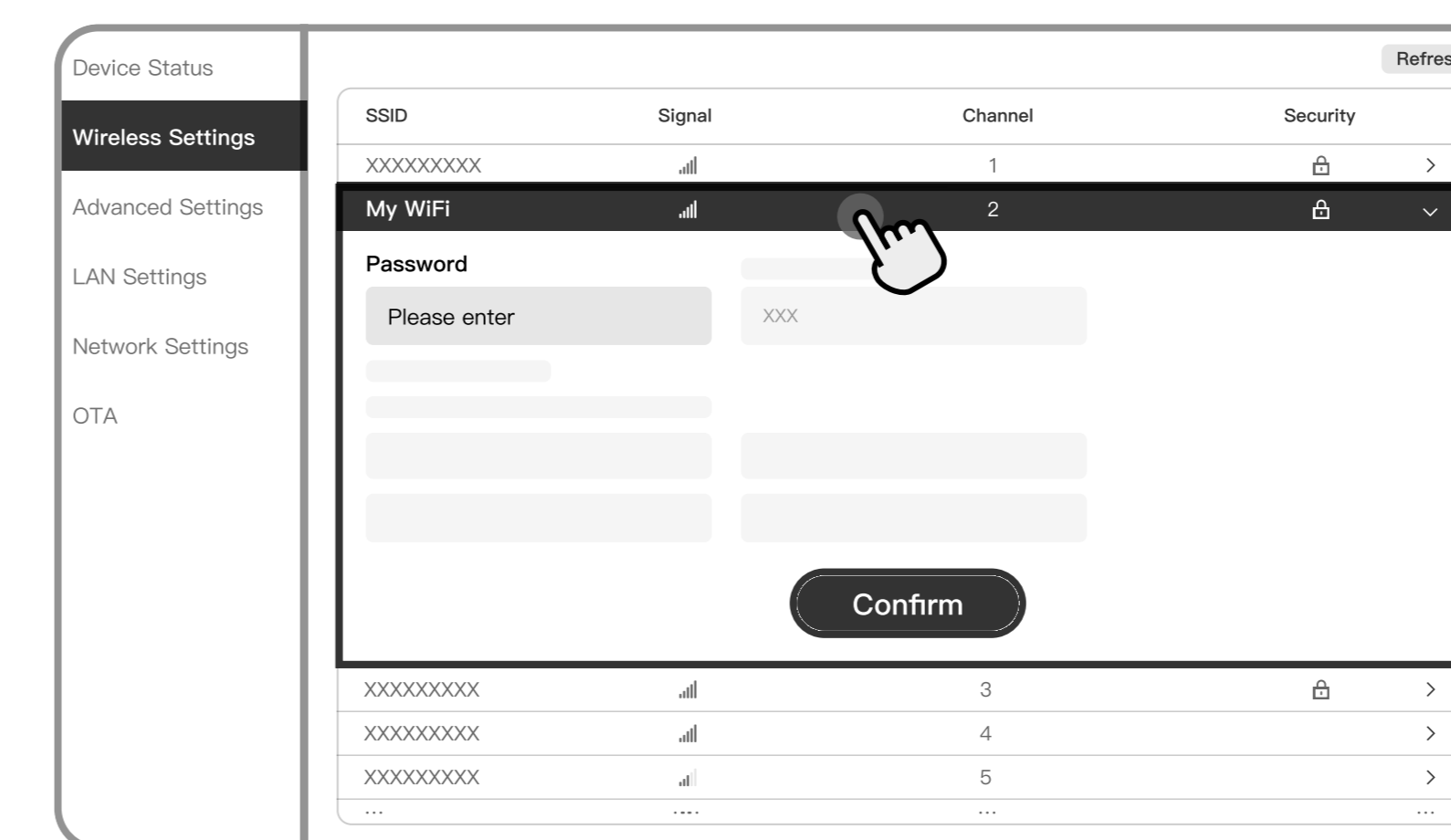
3 Set up WiFi

Click on "Wireless Settings", select the WiFi to connect.



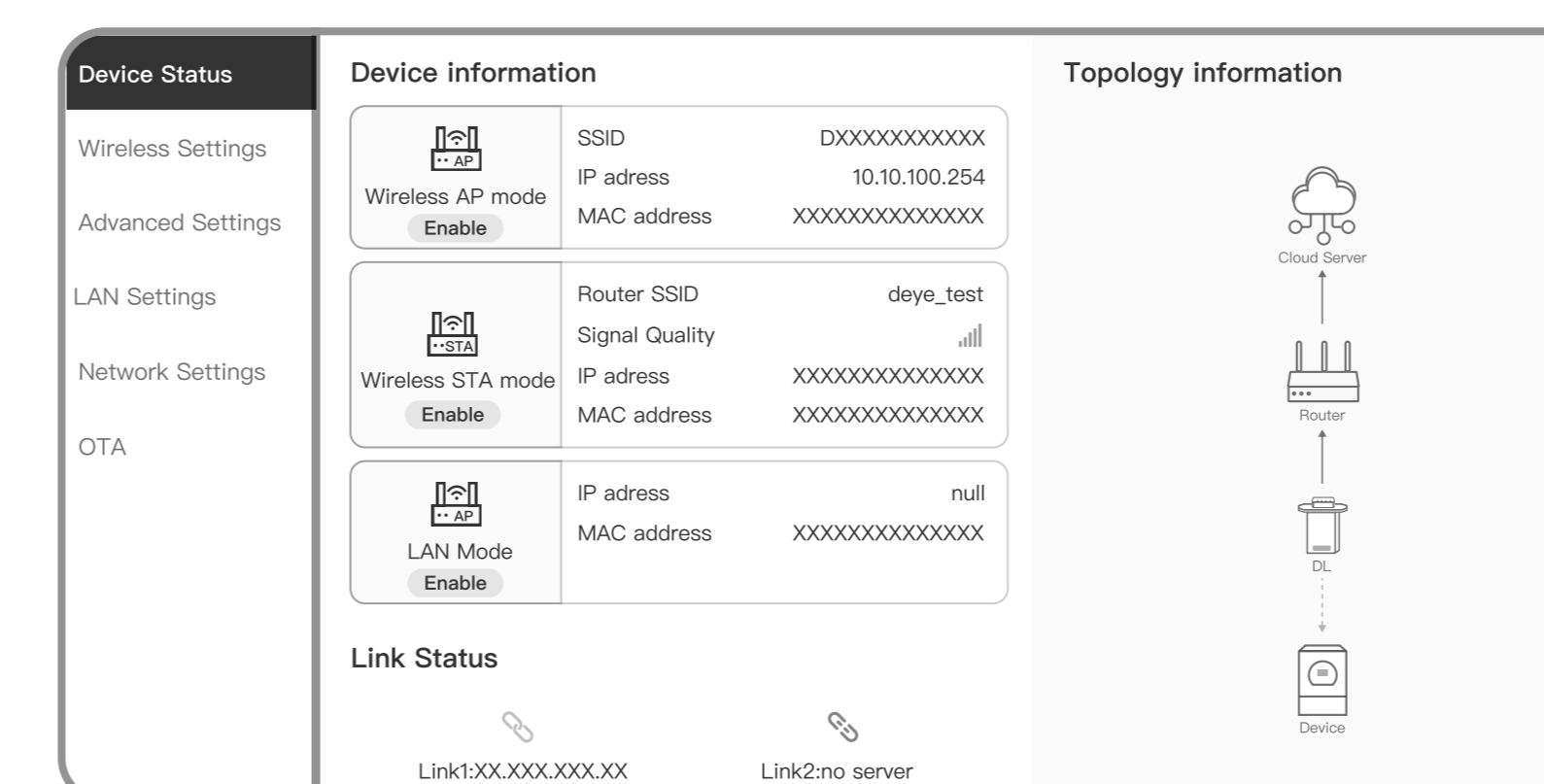
4 Enter WiFi password

Enter the password and Click "Confirm" to complete the WiFi setup.



5 Check WiFi configuration status

If the WiFi is successfully configured, the device information page will show wireless status as "Enable" and Cloud server status as "Connected".



Warranty Card

Dear Customers,

Thank you very much for using our products. In order to provide you with better service, please fill in the warranty card and reserve it carefully.

Filled in by the customer:

| | | | |
|----------------------|------|-----------------------------|--|
| User Name | | Customer Name | |
| Purchase Date | | Customer Phone | |
| Product Name & Model | | Product SN | |
| Customer Address | | | |
| Order No. | | | |
| Maintenance Records | Data | Failure Cause and Treatment | |
| | | | |
| | | | |

Warranty Policy

If there is any breakdown which caused by the product's own quality, customers can send the warranty card with the product to our Customer Service Center.

1. According to the prescription, the warranty period is 5 years(From the day when you receive the product). During the warranty period, we provide free maintenance service to solve all non-artificial quality problems if the product is under normal usage circumstance. If the product exceeds the warranty period, only maintenance cost will be charged.
2. If the failure of the product is not due to quality problems(such as improper use, improper storage, unauthorized disassembly, etc.), maintenance cost will be charged.
3. Please pay for back goods freight in advance. Freight collect is not accepted.

Contact

Email: service@deye.com.cn

Tel: +86 (0) 574 8622 8957

Address: No.26-30,SouthYongjiangRoad,Beilun,315806,Ningbo,China